



OWNER'S MANUAL E5X8 UTILITY TRAILER

CONGRATULATIONS!

You are now the proud owner of a BARRETO trailer. The following pages have important safety information as well as a detailed view of your trailer, along with corresponding part numbers. If you have any questions or need any replacement parts in the future, please contact us at your convenience. Our toll-free phone number, fax and email are listed below and parts may be ordered through any of these methods.

THANK YOU for your patronage and confidence in BARRETO equipment.

Barreto Manufacturing, Inc.

Innovative Equipment Engineered to Last

66498 Hwy 203, La Grande, OR 97850

(800) 525-7348 (541) 963-7348 FAX (541) 963-6755

E-Mail: info@barretomfg.com

Web Site: <http://www.barretomfg.com>

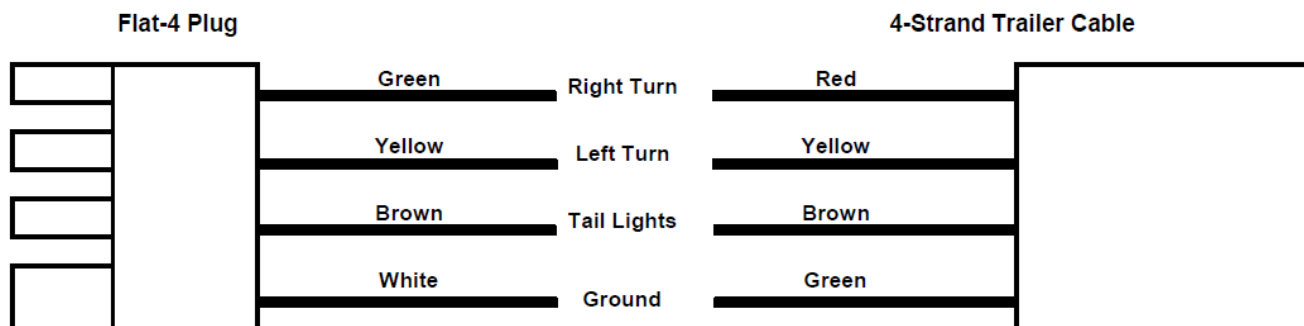
Be sure to read and observe the safety instructions for proper use of the Barreto Utility Trailer. If there are any questions regarding proper use, please contact Barreto Manufacturing, Inc. or an authorized Barreto Dealer. The VIN is located on the upper bed frame, on the left side and near the front.

Trailer VIN#: _____

Date of Purchase: _____

WIRING THE TRAILER

Four pin connectors are typical for the three lighting functions (tail, turn, and brake) plus one pin for the ground wire. Vehicle manufacturers have not standardized wiring colors. We recommend that a circuit tester is used on the tow vehicle wiring to locate the correct wire for each function. The wire that supplies 12 volt DC when switched on with the headlights in the tow vehicle is for the tail lights.



BARRETO MANUFACTURING, INC. EQUIPMENT WARRANTY

Barreto Manufacturing, Inc. warrants all **BARRETO** equipment to be free of defects in material and workmanship for a period of one (1) year, dating from the delivery to the original user.

This warranty is in lieu of all other warranties, whether written or implied, and is limited to:

1. Replacement of parts returned to the dealer and/or factory and determined defective upon inspection. (Replacement for parts to dealers shall be at dealer cost plus shipping charges.)
2. Time for pick-up and/or delivery, transportation of service calls by dealers is excluded. Manufacturer reserves the right to determine reasonable time required for repair.

Warranty does not apply to damage caused by abuse or neglect. Time and materials required for normal maintenance and service are also excluded from warranty coverage.

Engines, engine accessories, batteries and tires are warranted by the original manufacturers and are not covered by the Barreto Equipment Warranty. Wear parts such as tiller tines, sprockets, bearings, trencher chain parts including teeth, stump grinder cutting teeth & holders, etc. are also excluded unless it can be determined that a defect has contributed to premature wear.

SAFETY INSTRUCTIONS / CHECKLIST

Be sure to obey all traffic laws and rules of the road while towing the Barreto Utility Trailer. Never exceed 45 miles per hour while towing the trailer. The towing vehicle should be in legal operating condition. If local law requires trailer lights, be sure they are in good repair and are in proper working condition.

Refer to the following checklist before towing:

- Towing vehicle should have a 2" ball. Be sure it is in good repair and securely fastened to the vehicle.
- Securely fasten the hitch to the ball by tightening the hitch nut.
- Cross the chains under the trailer tongue to prevent the tongue dropping to the ground if the trailer comes loose.
- Attach the safety chain to the towing vehicle in such a way that it cannot come off accidentally.
- Check the hitch-to-ball connection after driving a few blocks and re-tighten if necessary.
- Allow only enough slack in the chains to permit proper turning of the vehicles. Do not let chains drag on the ground or be drawn up too tight. Slack strength should hold the tongue and coupler off the ground with the trailer loose.
- Strap or chain Barreto equipment to the trailer D-rings for highway, long distance, or rough road towing. Do this in addition to using a trencher wheel lock or tiller bumper purchase.

Always exercise extreme caution and allow extra clearance while towing a trailer.

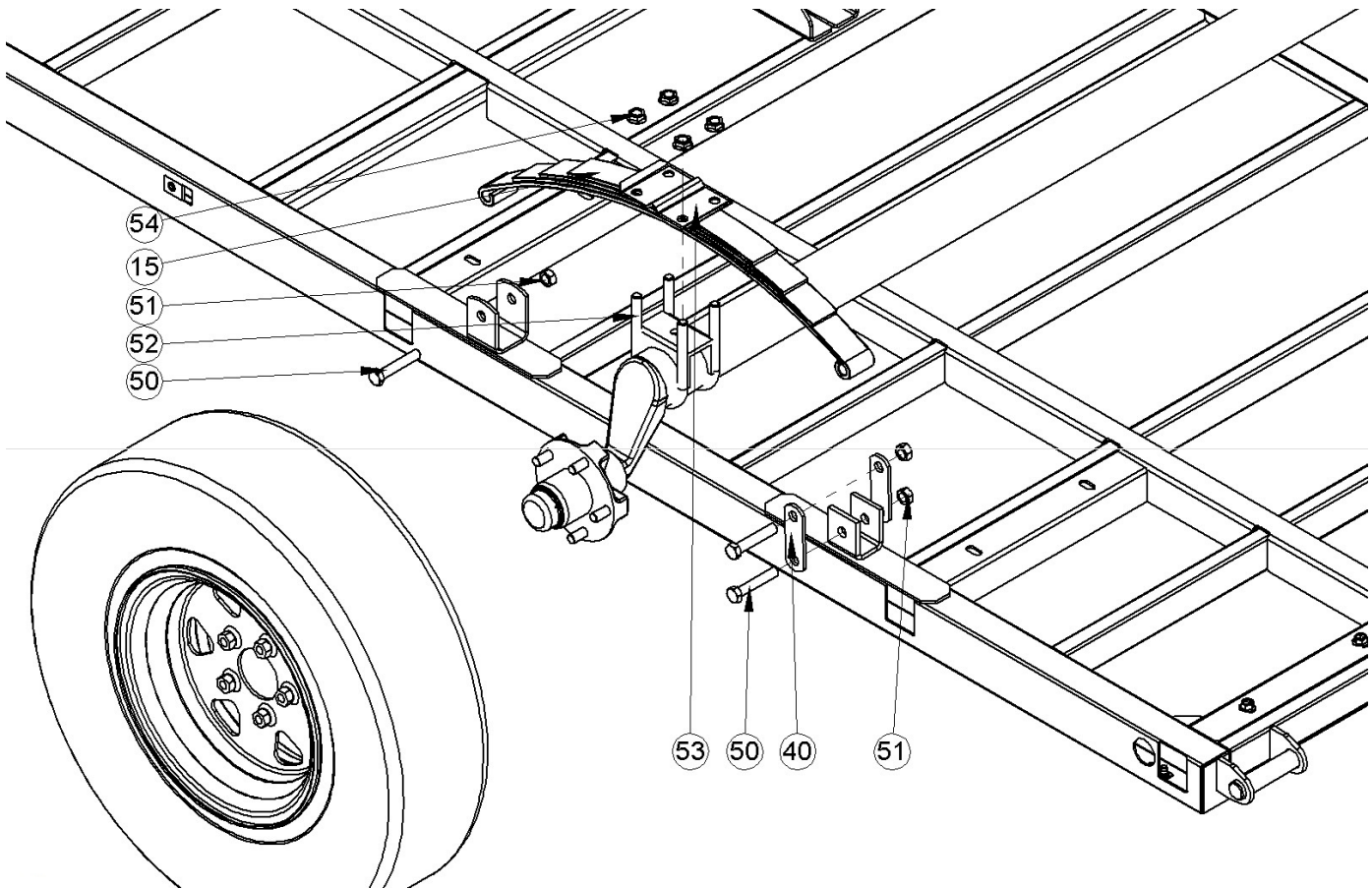
DRIVE SAFELY!

ASSEMBLY INSTRUCTIONS

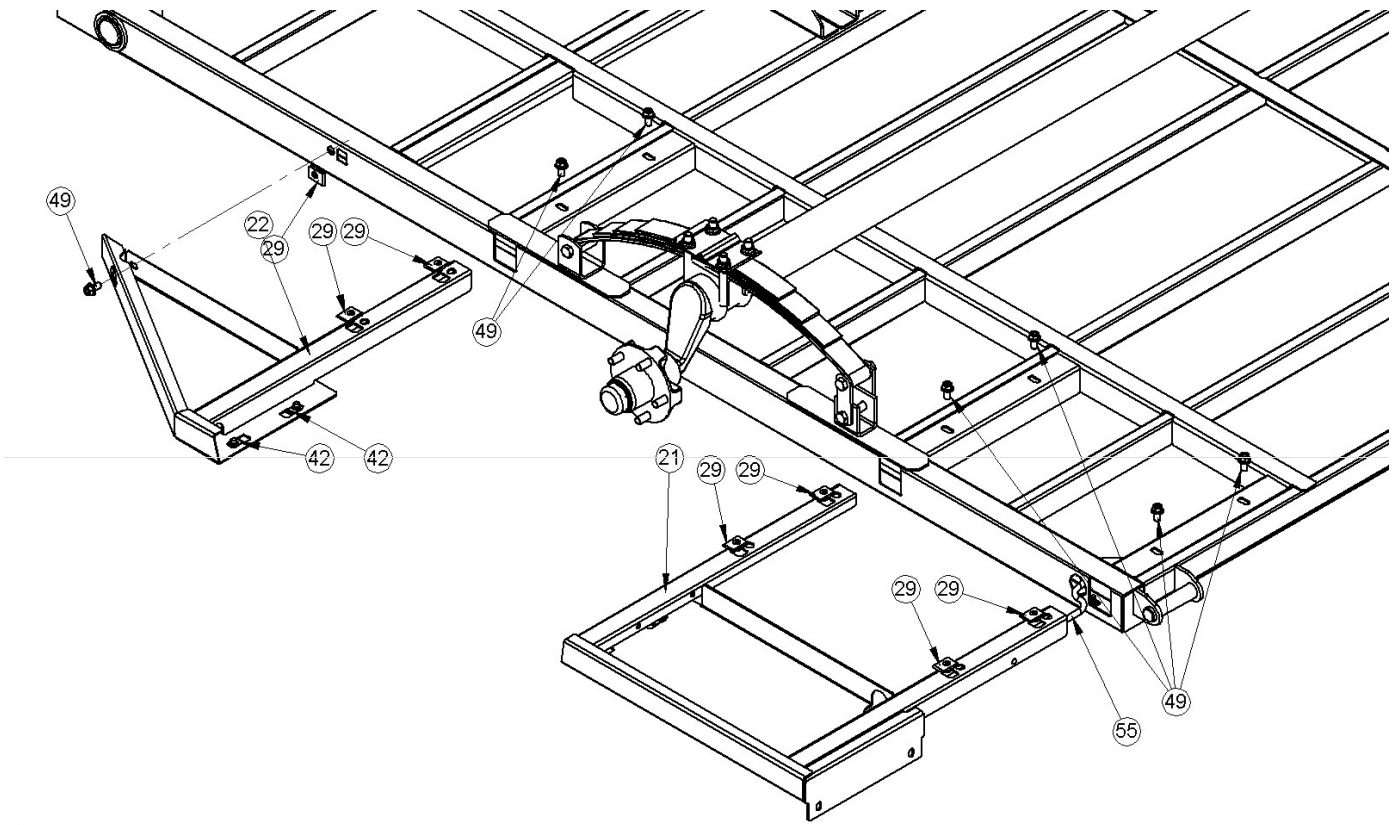
See the drawings at the back of this manual for list of parts and exploded views.

Your Barreto 5X8 Utility Trailer ships in flat-pack form, assembly of all major components is required. The trailer is positioned upside-down in its crate for assembly of the Axle and Bolt-On Fenders first. These instructions will guide you through the assembly process.

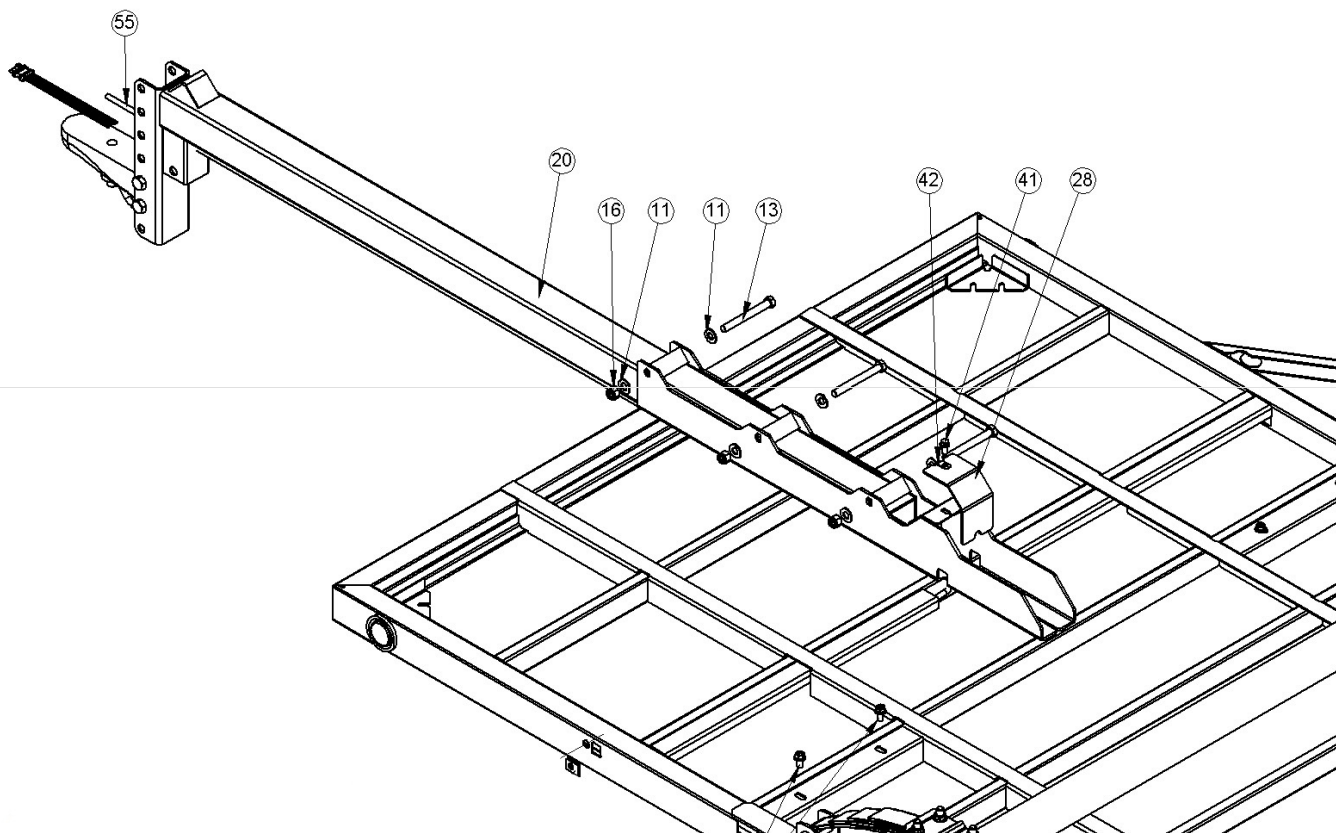
- Open crate and remove all components to prepare for assembly.



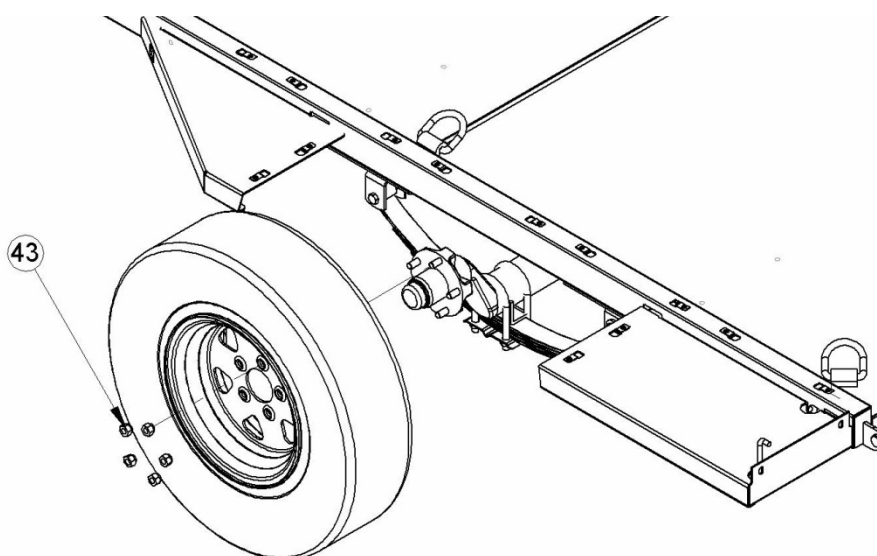
- Begin by bolting the Axle to the springs using the U-Bolts (Item 52), the U-Bolt Plate (Item 53) and the Spring Plate Nuts (Item 54). Tighten all nuts.
- Position the axle over the deck, bolt the spring in the Front Spring Mount and the Spring Shackles (Item 40) on the Rear Spring Mount. Tighten all nuts.

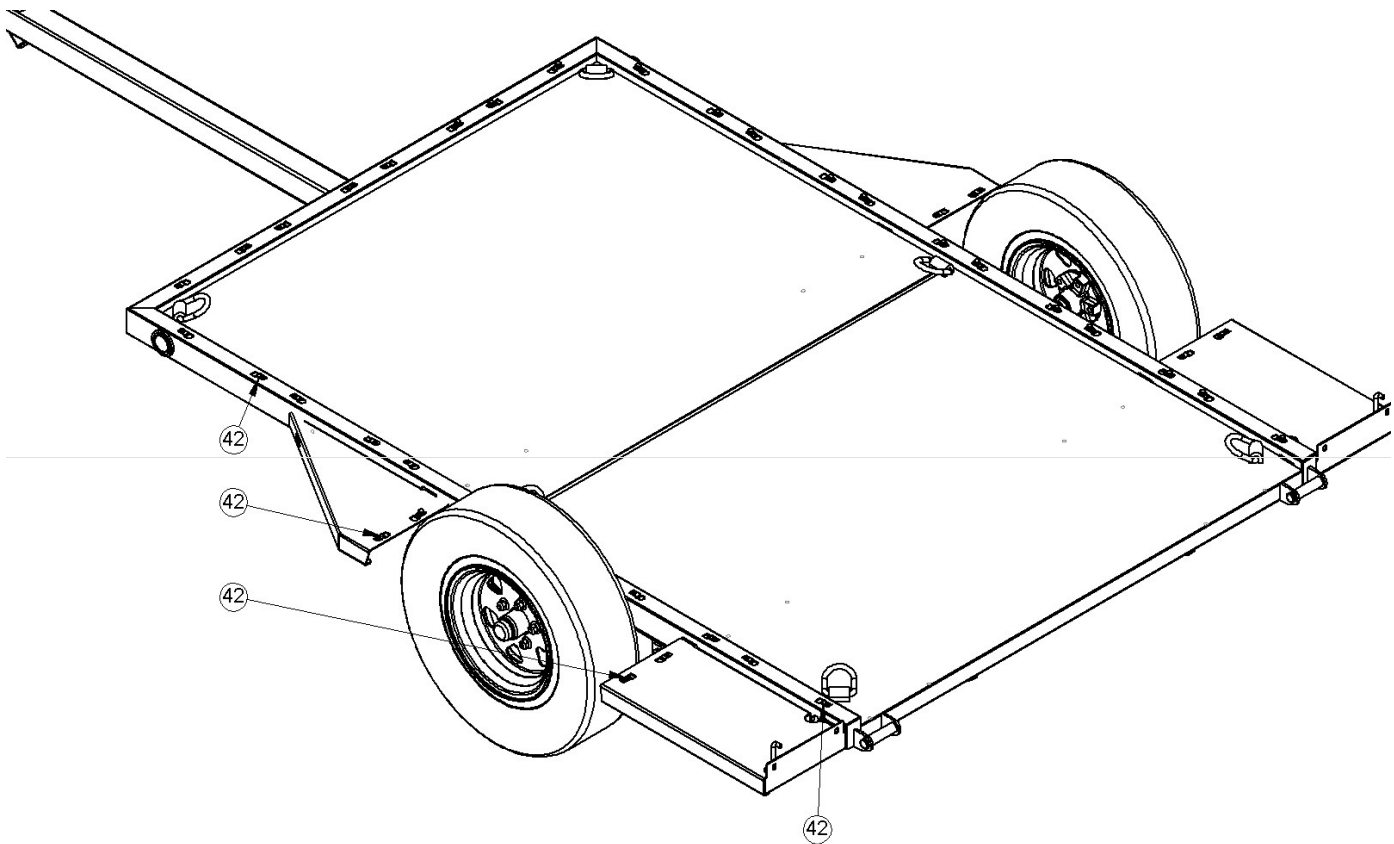


- Install 3/8" J-Clip Nuts (Item 29) into outer fender braces and frame tube as shown. Insert J-Clips into rectangular hole until threaded nut lines up with the circular hole in the fender brace. The Clip should snap into place when installed correctly.
- Slide Bolt-On Fenders into frame. Guide the Wiring Harness (Item 55) through the holes in the fender plate and Zip Tie to the inside of the fender brace. Line up the fender brace clips in deck slots and tighten all bolts (Item 49).
- Follow same steps for left and right set of Bolt-On Fenders.

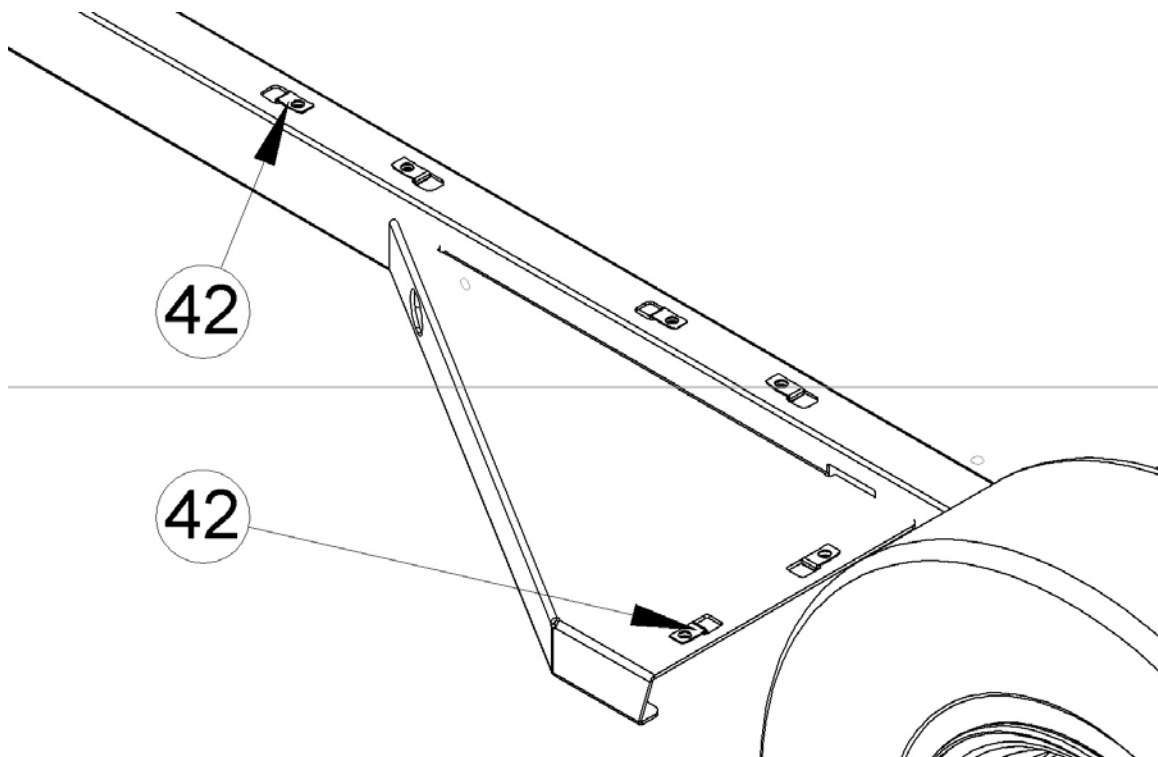


- Position the Trailer Tongue (Item 20) in the cradle with the bolt angles lined up with the holes in the brackets. Run Wiring Harness (Item 55) through tongue tube to the hitch. Tighten all bolts.
- Install Tires and Lug Nuts.





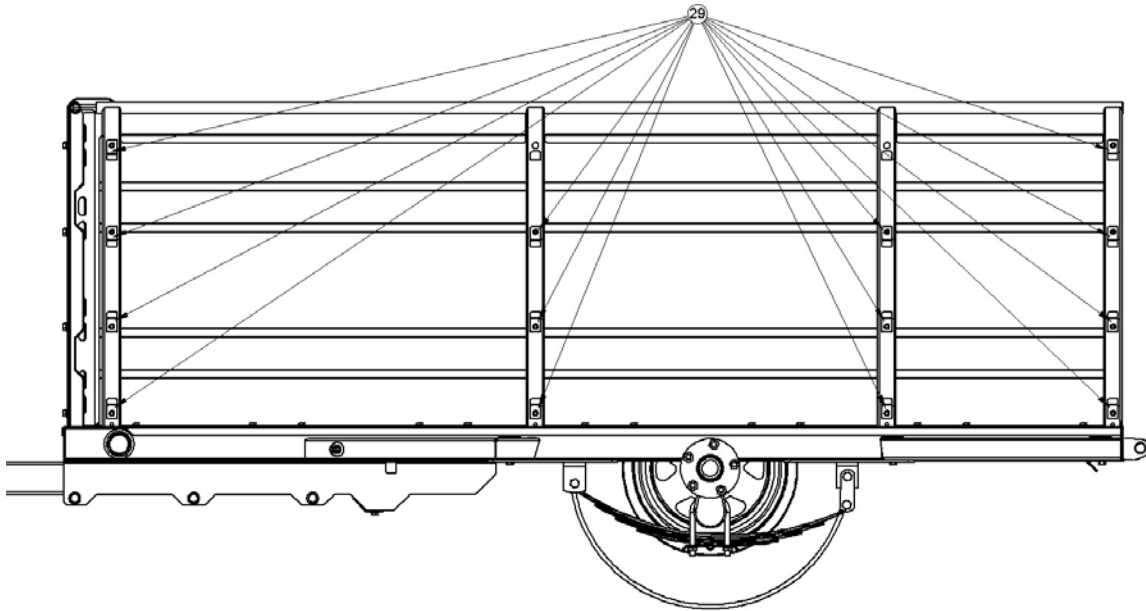
- Rotate the assembly to the upright position using a hoist or forklift.
- Install 5/16" J-Clip Nuts (Item 42) into all holes in the top of the frame and fenders.



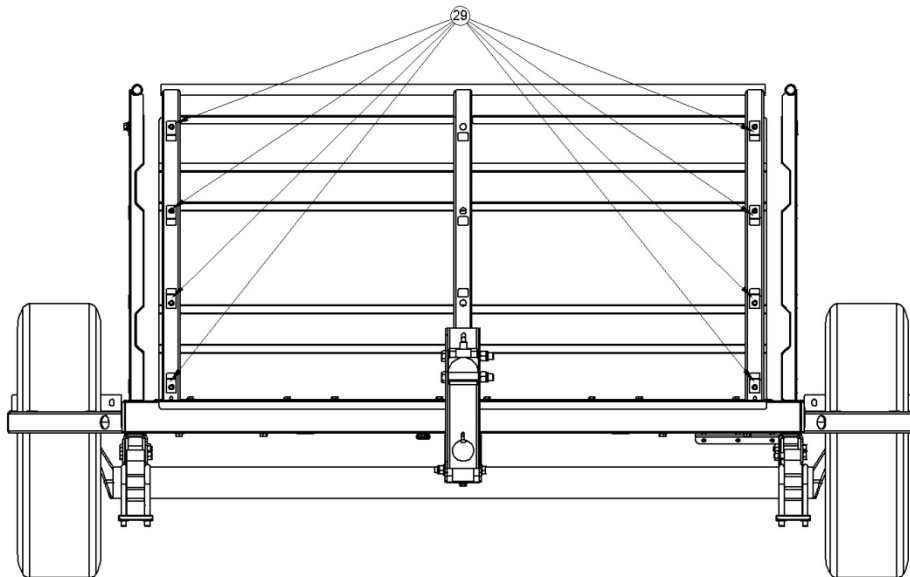
THE FOLLOWING ARE INSTRUCTIONS FOR THE E5X8HST HIGH SIDE TRAILER.

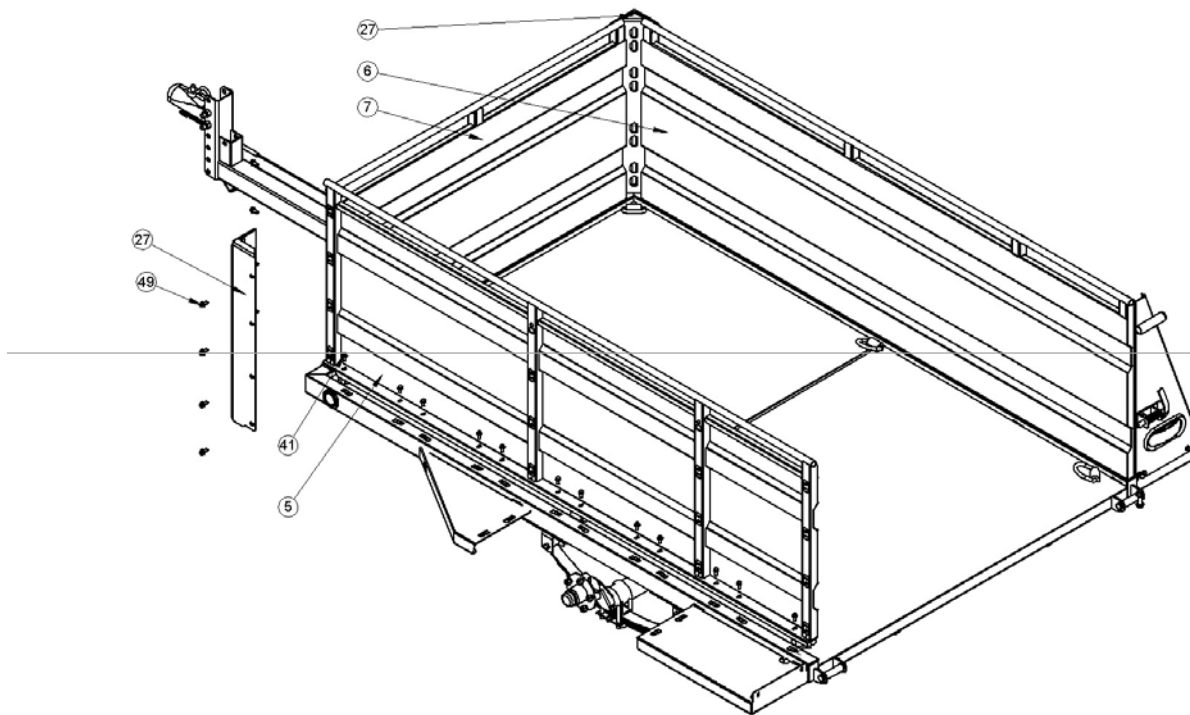
FOR THE E5X8DGT SHORT SIDE TRAILER INSTRUCTIONS, PLEASE TURN TO PAGE 13.

(Note- Item Numbers shown are labeled in the E5X8HST Diagram near the end of this Manual)

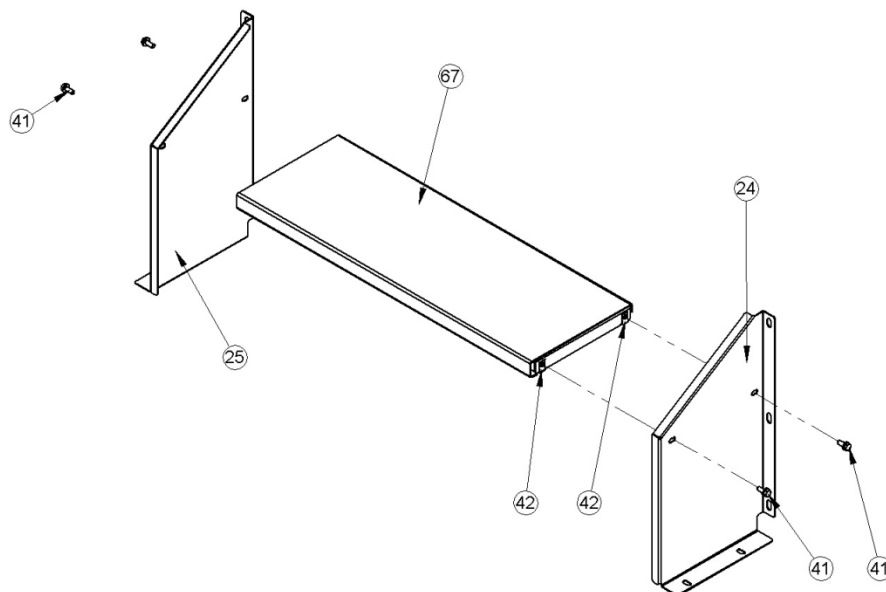


- Prepare the High Side and Front Wall sections for assembly by installing 3/8" J-Clip Nuts (Item 29) in the side rails as shown.

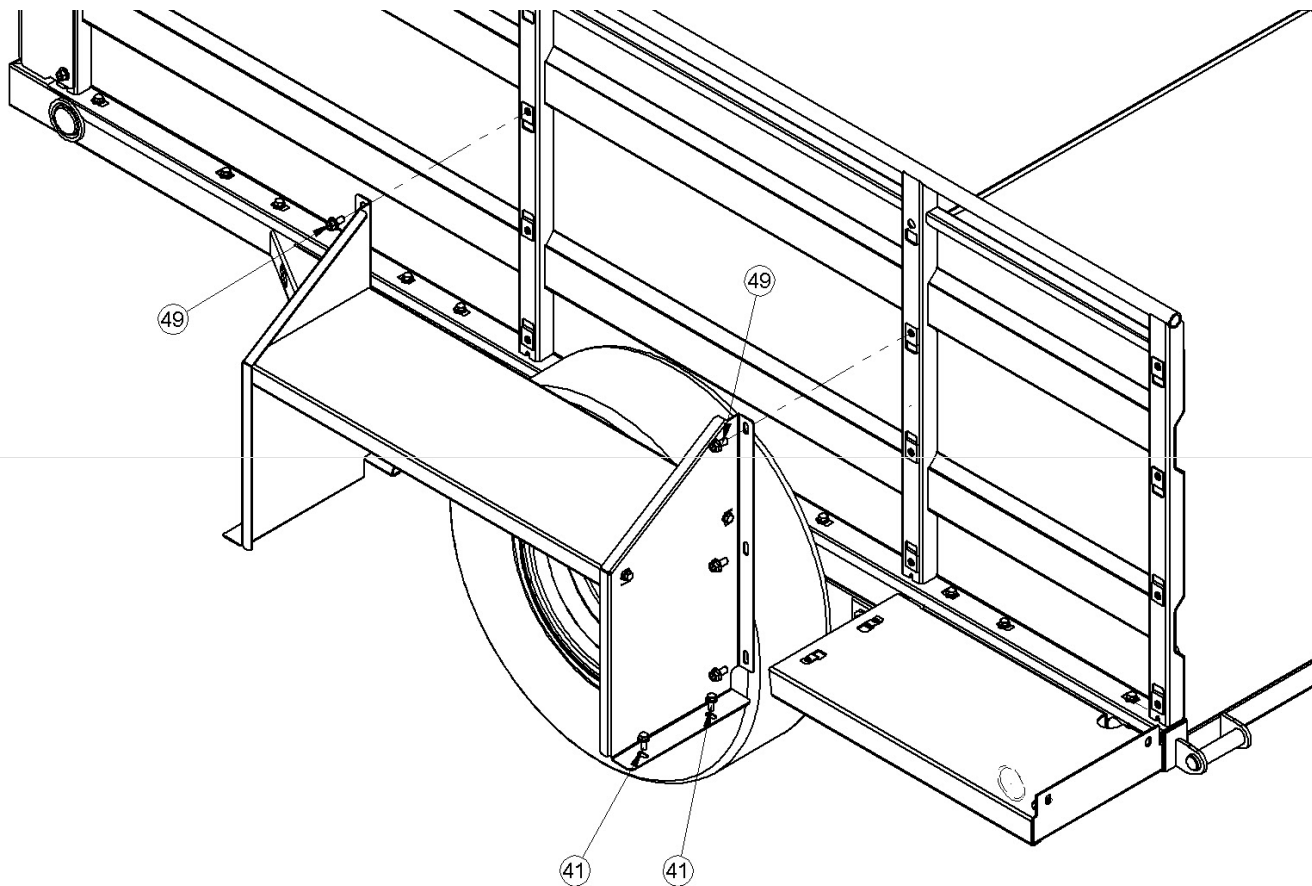




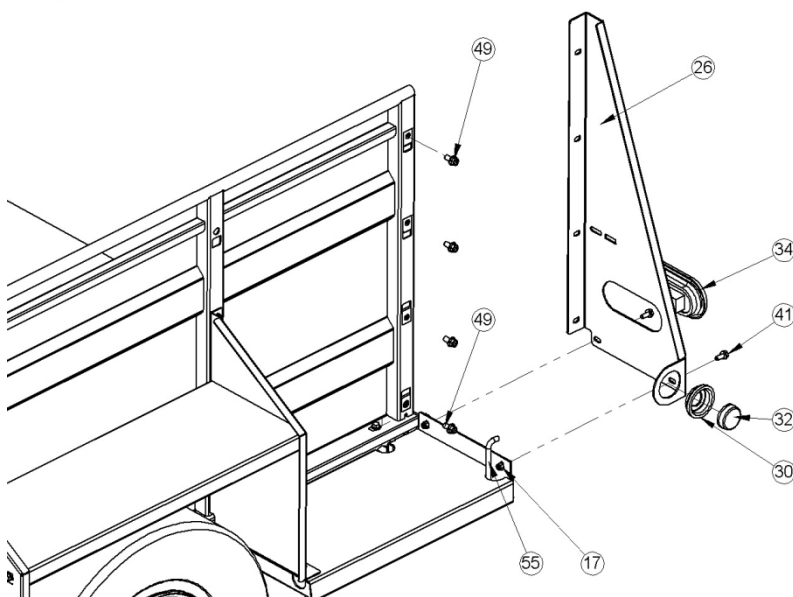
- Place Side Wall sections (Items 5,6,7) on the trailer Deck. Install 5/16" Flange bolts (Item 41) in all slots finger tight. DO NOT tighten all bolts at this point.
- Install corner braces (Item 27) with 3/8" Flange bolts (Item 49) finger tight.



- Assemble both Side Fenders as shown. Install 5/16" J-Clip Nuts (Item 42) in either end of fender (item 67). Bolt together Fender Assembly with 5/16" Flange Bolts (Item 41).

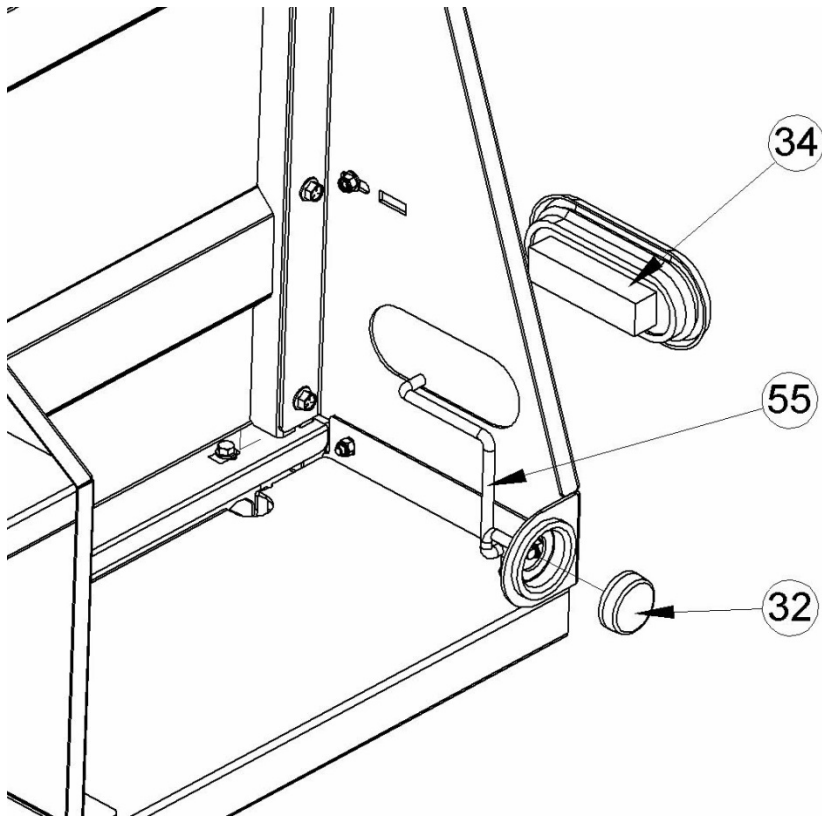


- Install both Fender Assemblies as shown with 3/8" Flange Bolts (item 49) into side wall J-Clips and 5/16" Flange Bolts (Item 41) into the Bolt-On Fender J-Clips.

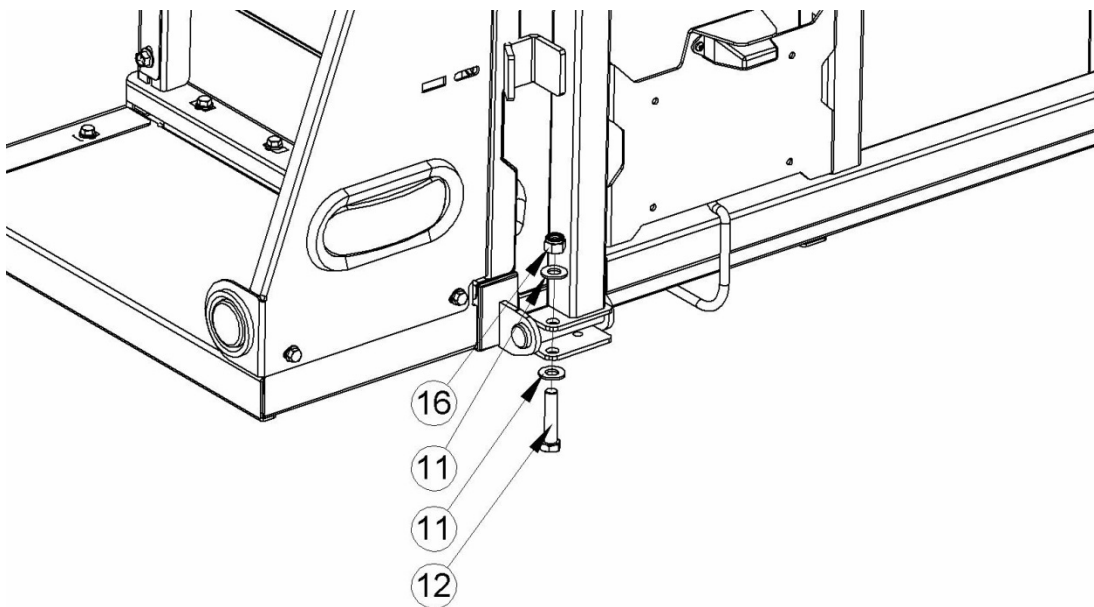


- Install High Wall End Caps (Item 26) with 3/8" Flange Bolts (Item 49) into side wall J-Clips. Use 5/16" Flange Bolts and Nylock nuts (Items 41, 17) to bolt End Cap to Bolt-On Fender.

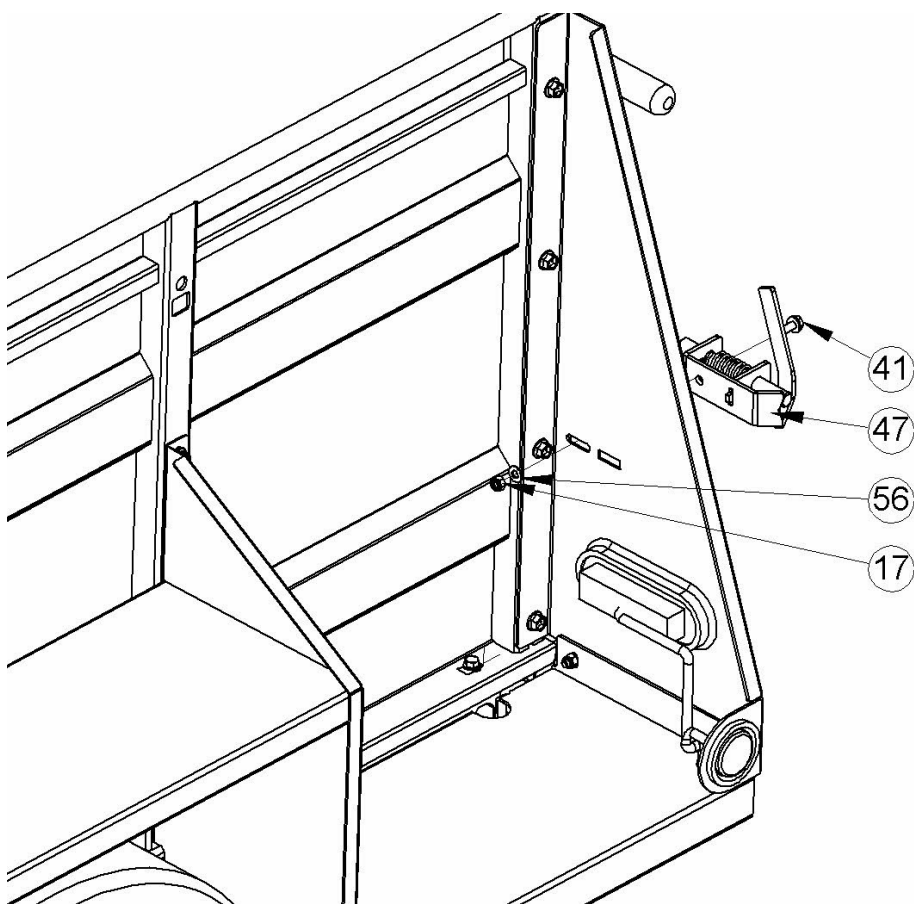
- Connect Wiring Harness (Item 55) to Tail Lamp and Side Marker Light.



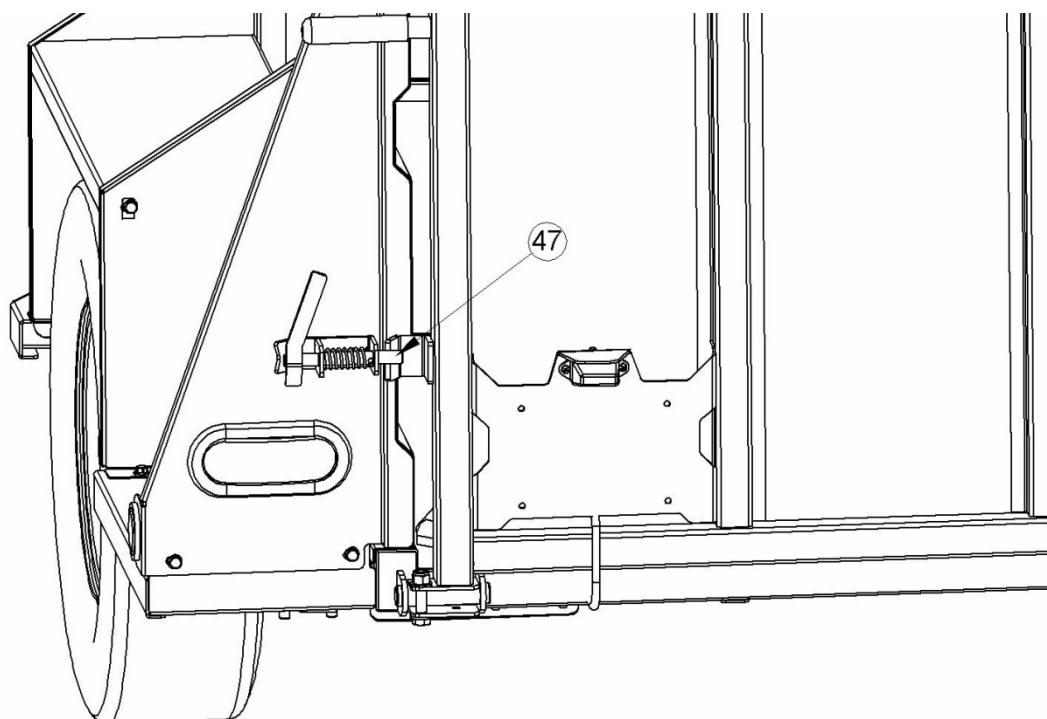
- Tighten ALL side wall bolts, corner brace bolts and fender bolts at this time.

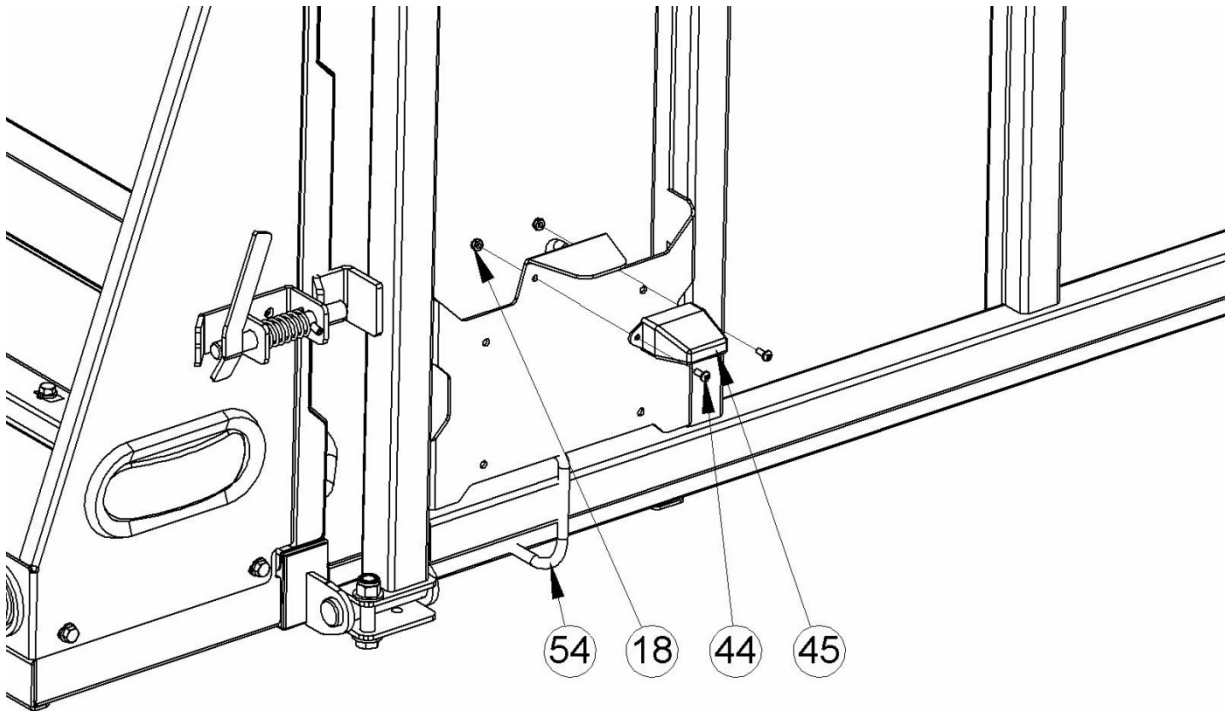


- Place Ramp Section onto ramp pivots at the back of the deck. Rotate ramp into vertical position and install 1/2" bolt, washers and nylock nuts (Items 12, 11, 16). Bolts MUST be installed as shown to ensure proper function of Ramp.

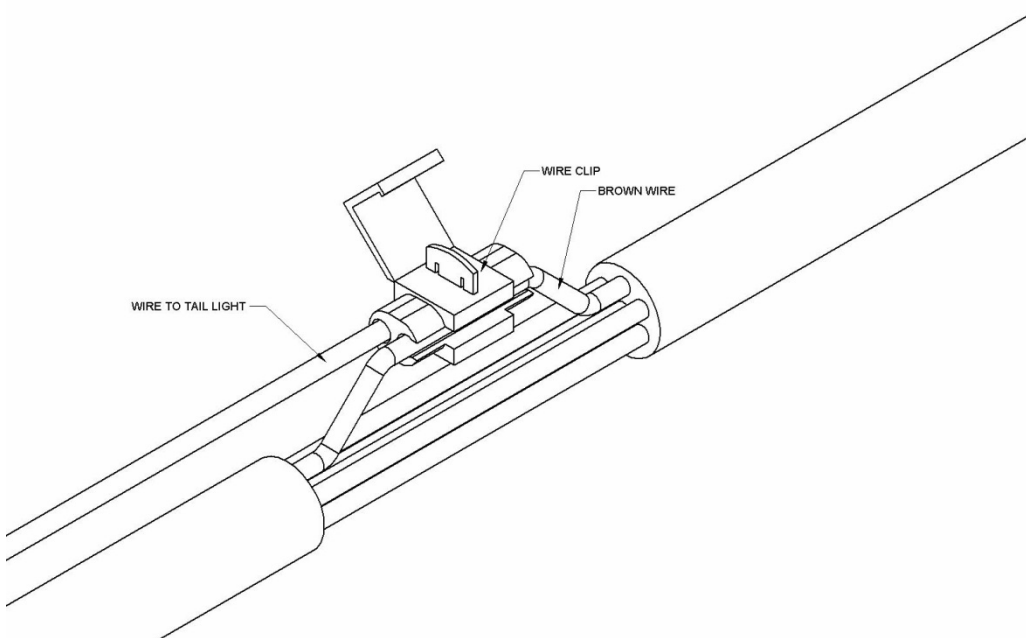


- Locate Ramp Latch (Items 47, 48) and install on either side as shown. Position Ramp Latch Pin in the locked position overlapped 5/8" - 3/4" with ramp plate as shown, tighten flange bolt and nut.





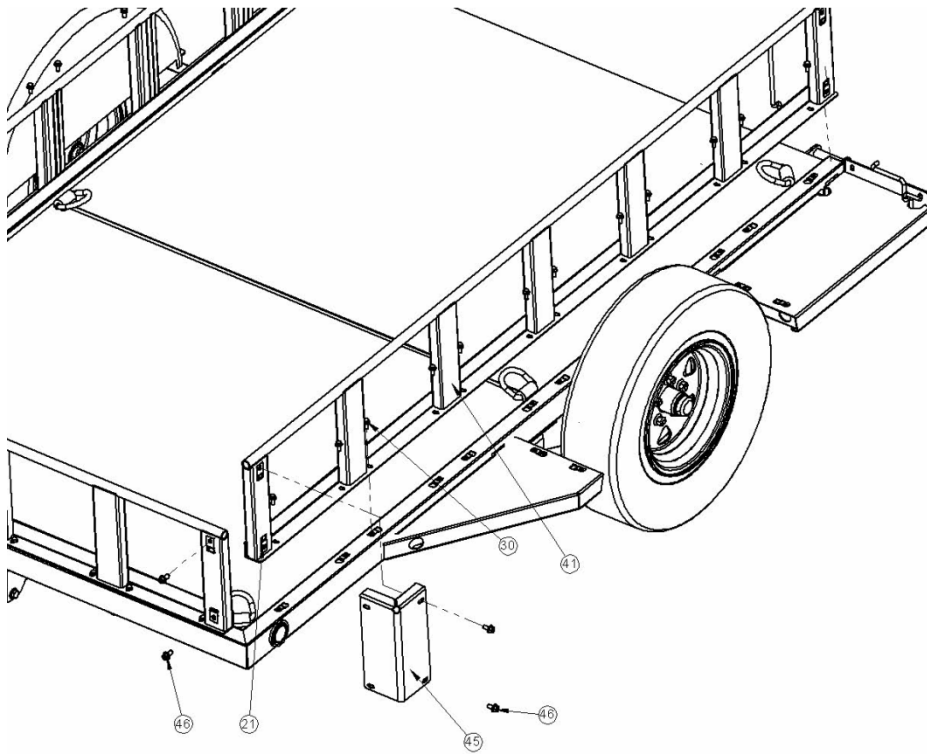
- Install License Plate Light (Item 34) as shown on License Plate Bracket with the light shining down on license plate area. The ground wire connector should be placed on one of the screws.



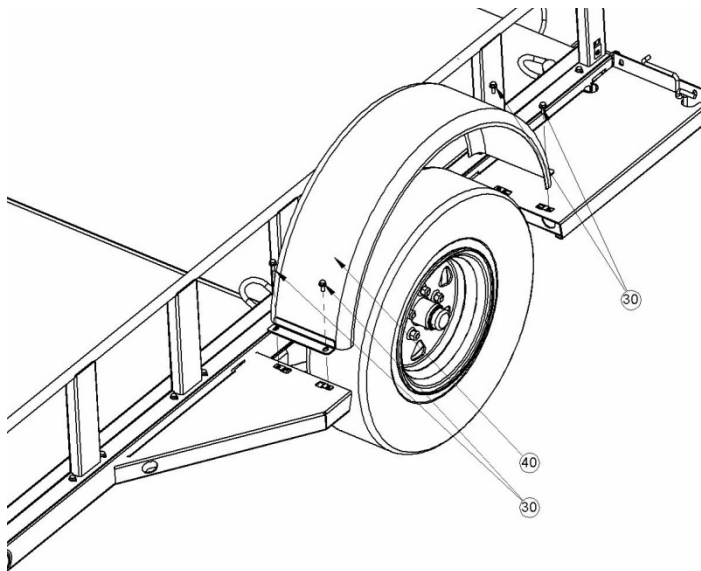
The License Plate light will have a length of wire connected to it. Route this wire back under the trailer to the Side Marker/Tail Light wiring. Splice License Plate wiring into Tail Light wiring with the provided Wire Clip as shown.

E5X8DGT SHORT SIDE TRAILER INSTRUCTIONS

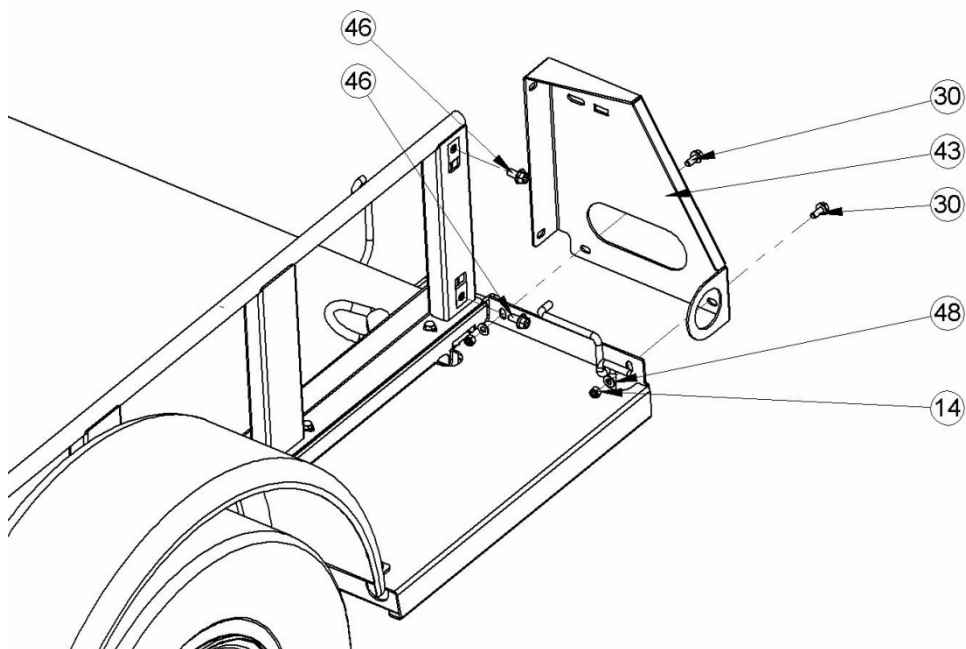
(Note- Item Numbers shown are labeled in the E5X8DGT Diagram near the end of this Manual)



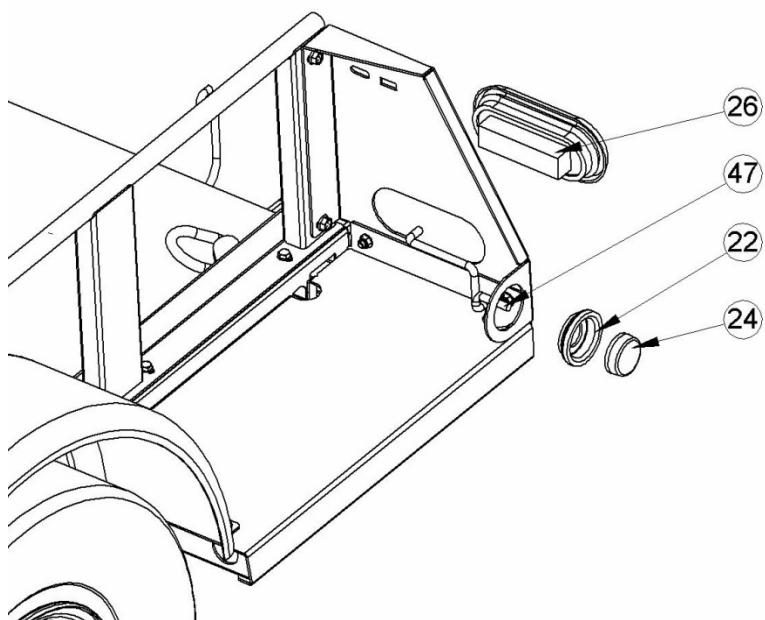
- Install 3/8" clip nuts (Item 21) in each corner of the three rails as shown.
- Position rails at edges of deck and install 5/16" flange bolts in each slot.
- Position Corner Braces (Item 45) at front corners, install with 3/8" flange bolts.



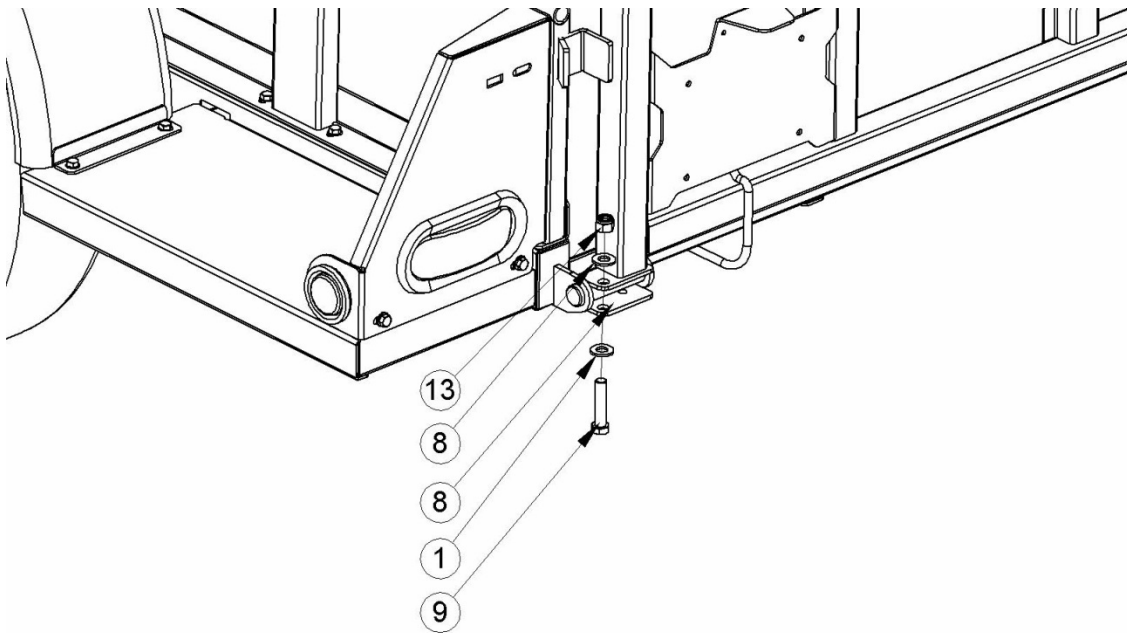
- Install fenders (Item 40) on either side with 5/16" Flange Bolts (Item 30). Tighten bolts.



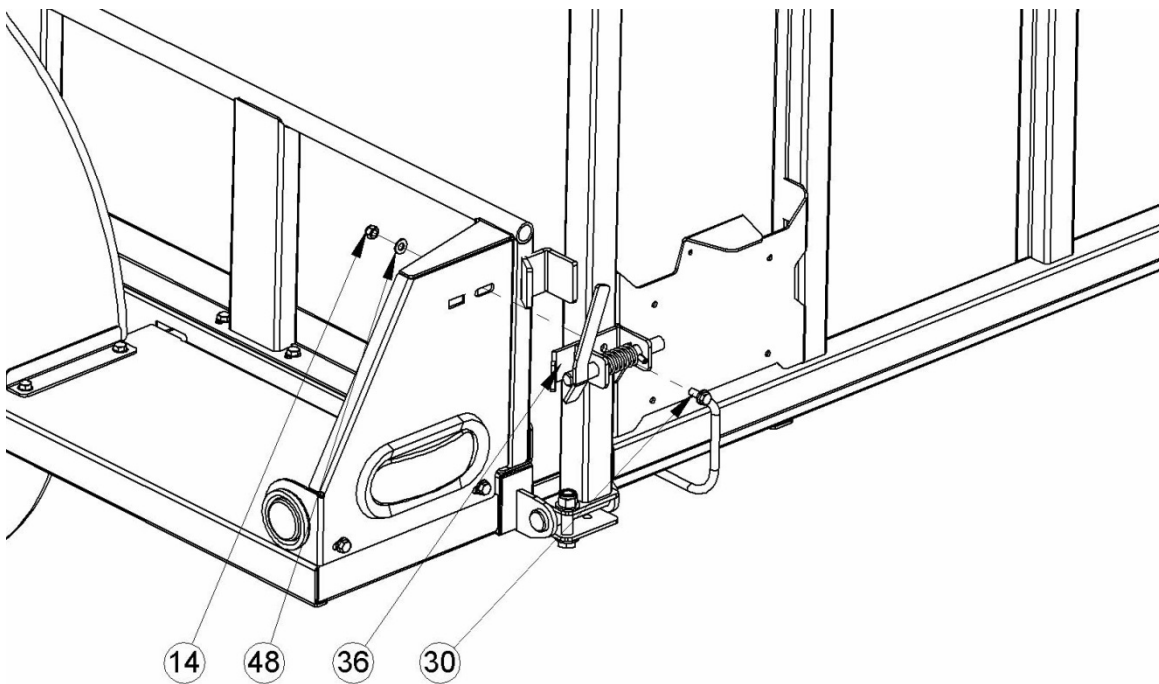
- Position Rear Fender Braces (Item 43) on either side of trailer as shown. Bolt Fender Brace and Side rail together with 3/8" Flange Bolt (Item 46). Bolt Fender Brace and Rear Fender together with 5/16" Flange bolt, washer and nut (Items 30, 48, 14).



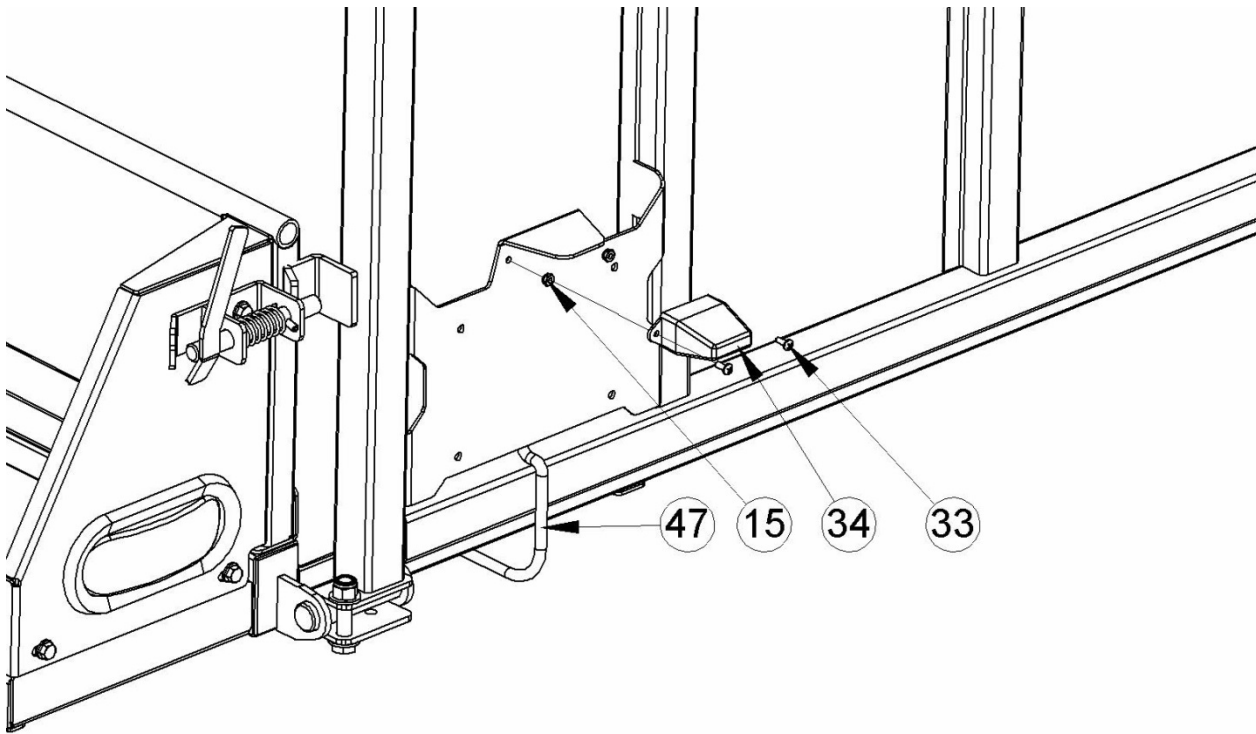
- Install Tail Light (Item 26) and Red Side Marker Light (Item 24) in Rear Fender Brace as shown. Plug Wiring Harness connectors (Item 47) into the lights.



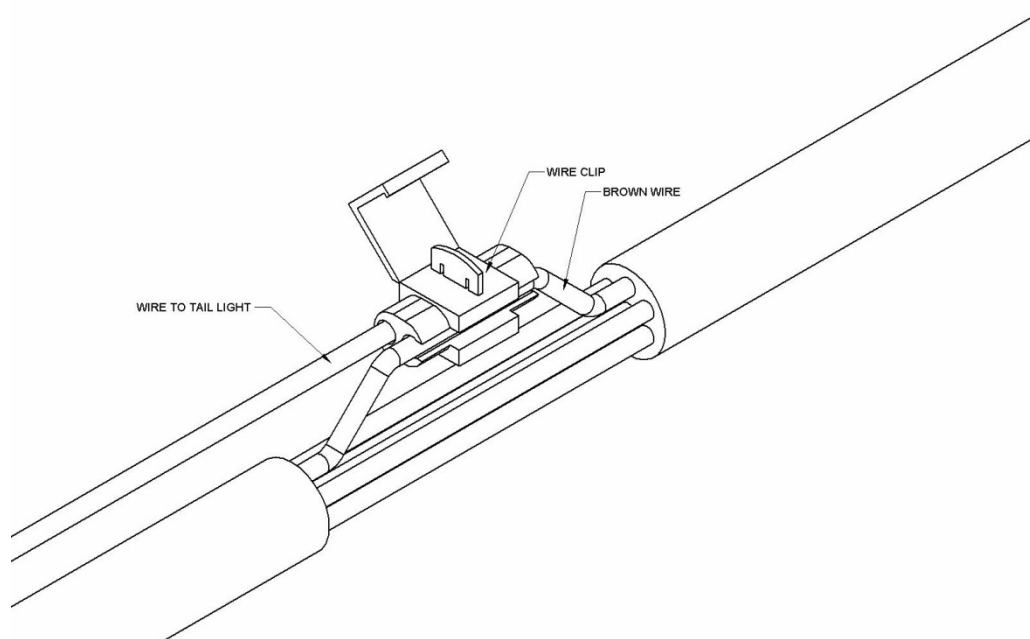
- Position Ramp Section (Item 1) onto Trailer Deck and pivot up into upright position as shown. Install $\frac{1}{2}$ " Bolt, Washers and Nut. Tighten Nut until Bolt is tight but does not clamp down on pivot shaft. Bolts must be installed as shown for proper function.



- Install Ramp Latch (Item 36) onto Fender Brace in locked position as shown. Slide Ramp Latch in slots until Lock Pin and Ramp Catch Plate are overlapped $\frac{5}{8}$ "- $\frac{3}{4}$ ". This will ensure proper function of Ramp Latch.



- Install License Plate Light (Item 34) as shown on License Plate Bracket with the light shining down on license plate area.



- The License Plate light will have a length of wire connected to it. Route this wire back under the trailer to the Side Marker/Tail Light wiring. Splice License Plate wiring into Tail Light wiring with the provided Wire Clip as shown.

